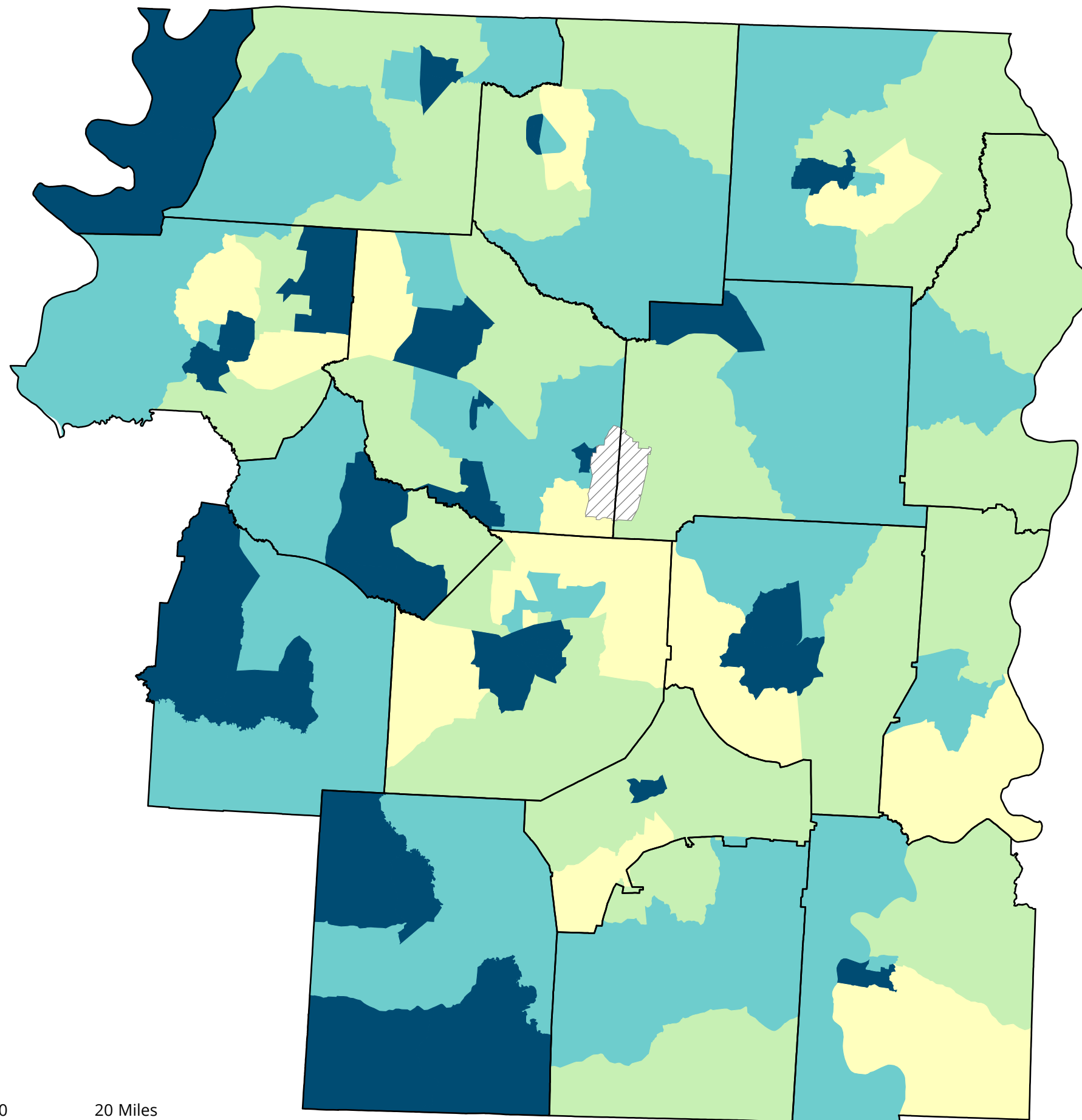


Social Vulnerability Index, WATCH (West Area TN Coalition of Healthcare)

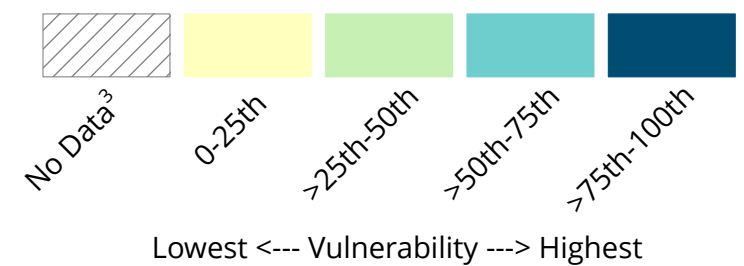


0 5 10 20 Miles

Overall Social Vulnerability

Social vulnerability refers to a community's capacity to prepare for and respond to the stress of hazardous events ranging from natural disasters, such as tornadoes or disease outbreaks, to human-caused threats, such as toxic chemical spills. This Social Vulnerability Index (SVI 2020)¹ map depicts the social vulnerability of communities, at the census tract level, throughout the West Area Tennessee Coalition of Healthcare. SVI 2020 groups sixteen census-derived factors² into four themes that summarize the extent to which the area is socially vulnerable to disaster. The factors include economic data as well as data regarding education, family characteristics, housing, language ability, ethnicity, and vehicle access. Overall Social Vulnerability combines all the variables to provide a comprehensive assessment.

Percentile Ranking



Notes: ¹The SVI combines percentile rankings of US Census American Community Survey (ACS) 2016-2020 variables, for Tennessee, at the census tract level.

²Poverty, Unemployed, Housing Cost Burden, No High School Diploma, No Health Insurance, Elderly, Children, Single-parent household, Civilian with a Disability, English Language Ability, Racial & Ethnic Minority Status, Multi-unit household, Mobile Homes, Crowding, No Vehicle, Group Quarters

³Census tracts with near 0 population

Data Sources: Centers for Disease Control and Prevention/Agency for Toxic Substances and Disease Registry/Geospatial Research, Analysis, and Services Program. Social Vulnerability Index 2020 State Database.

<https://svi.cdc.gov/SVIDataToolsDownload.html>. Accessed 29 Feb 2024.

Projection: NAD 1983 StatePlane Tennessee FIPS 4100

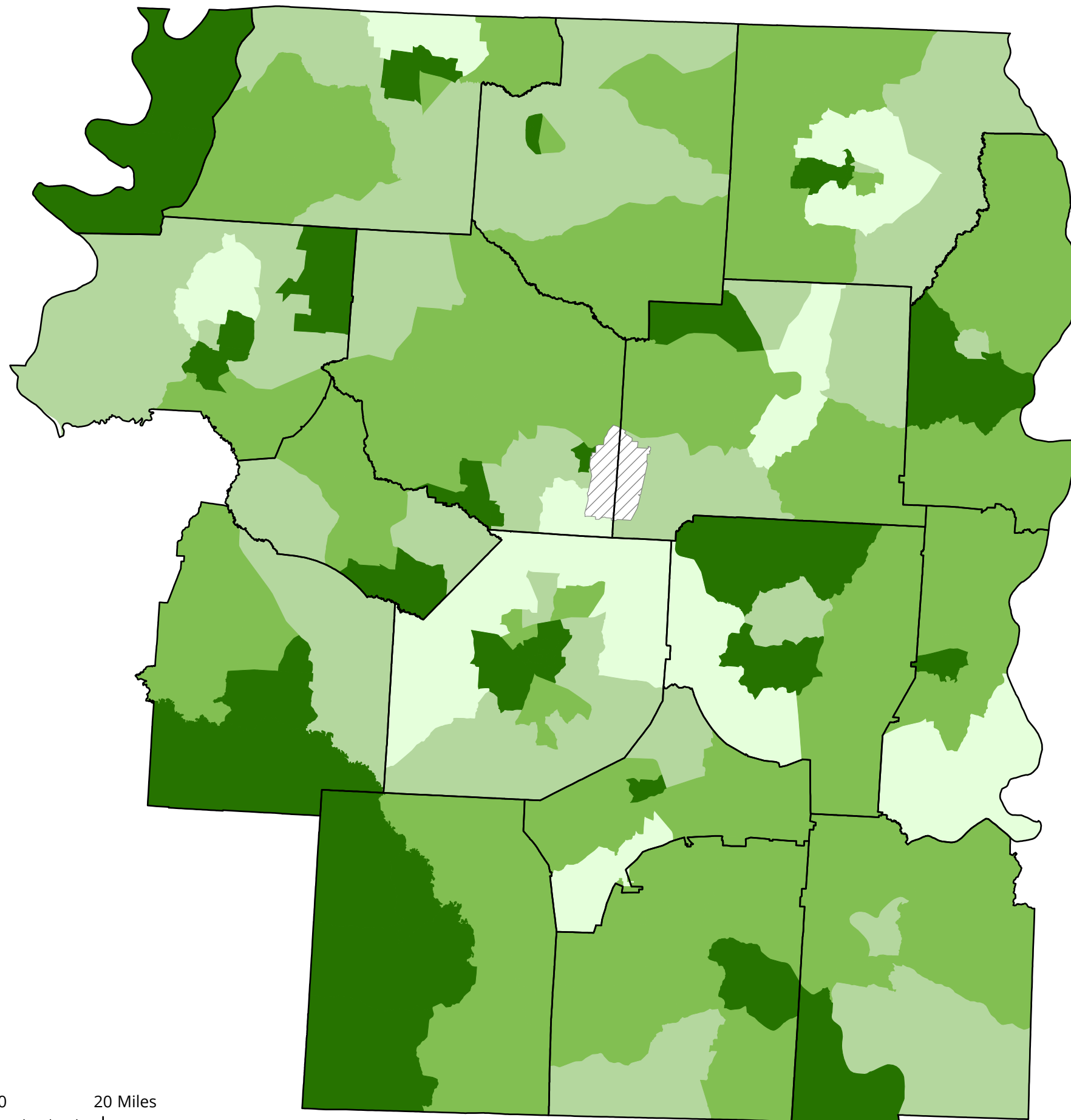
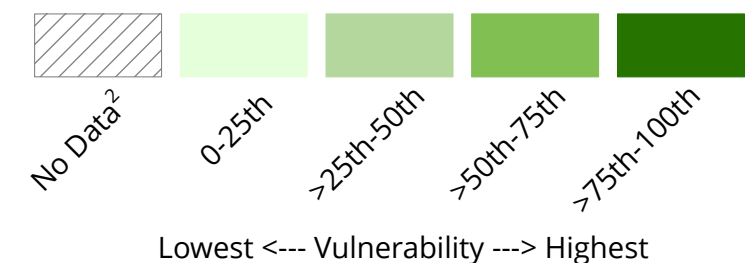
Social Vulnerability Index, WATCH (West Area TN Coalition of Healthcare)

SVI Theme: Socioeconomic Status

Social vulnerability refers to a community's capacity to prepare for and respond to the stress of hazardous events ranging from natural disasters, such as tornadoes or disease outbreaks, to human-caused threats, such as toxic chemical spills. This map depicts the social vulnerability of communities based on socioeconomic status. The census-derived factors¹ that make up the socioeconomic theme include:

- Poverty
- Unemployed
- Housing cost burden
- No high school diploma
- No health insurance

Percentile Ranking



0 5 10 20 Miles

Notes: ¹Percentage of persons below poverty, Percentage of civilian (age 16 and older) unemployed, Percentage of persons that spend 30% or more of annual income on housing costs, cost burden, Percentage of persons with no high school diploma, Percentage of persons with no health insurance

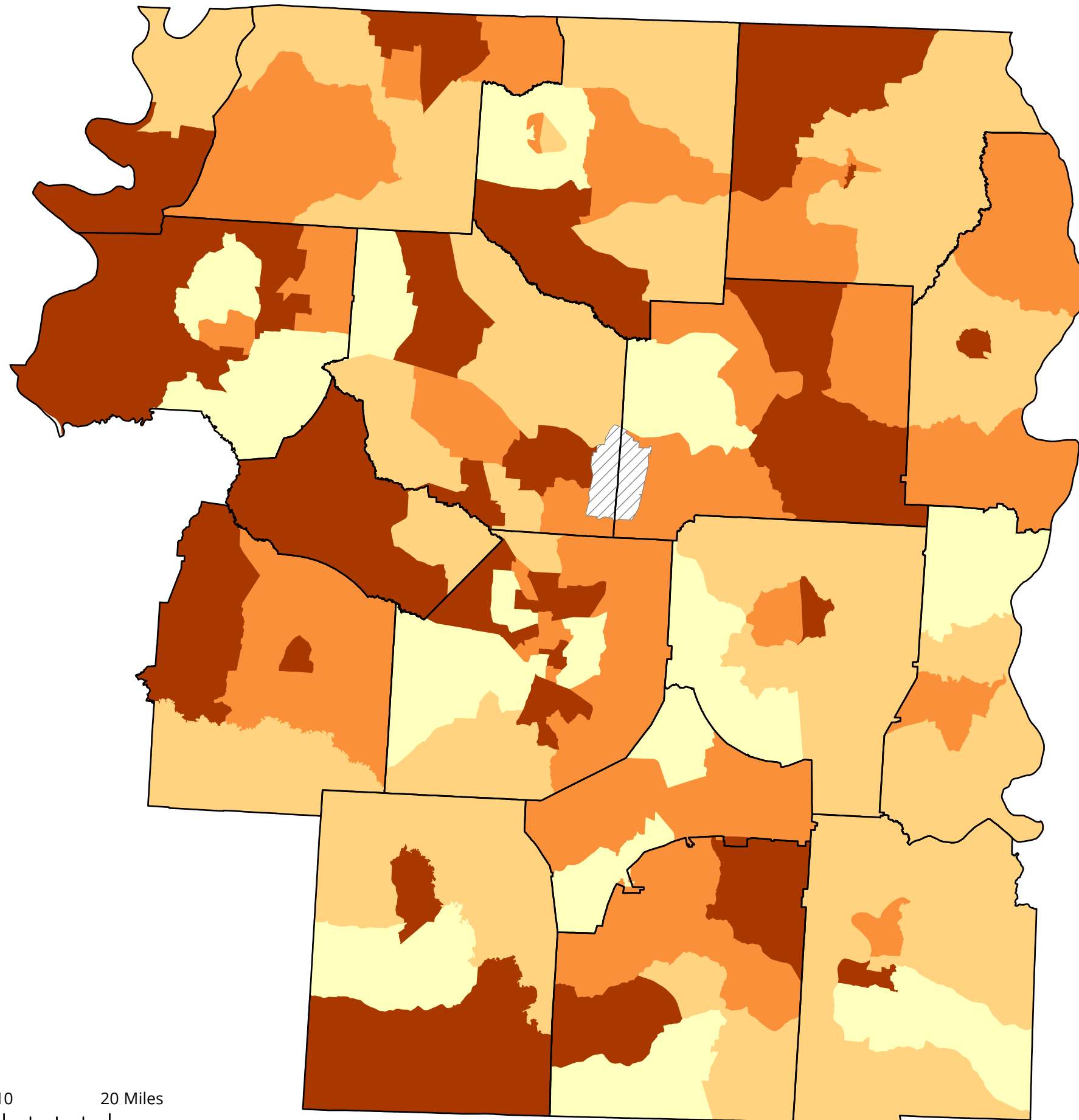
²Census tracts with near 0 population

Data Sources: Centers for Disease Control and Prevention/Agency for Toxic Substances and Disease Registry/Geospatial Research, Analysis, and Services Program. Social Vulnerability Index 2020 State Database.

<https://svi.cdc.gov/SVIDataToolsDownload.html>. Accessed 29 Feb 2024.

Projection: NAD 1983 StatePlane Tennessee FIPS 4100

Social Vulnerability Index, WATCH (West Area TN Coalition of Healthcare)

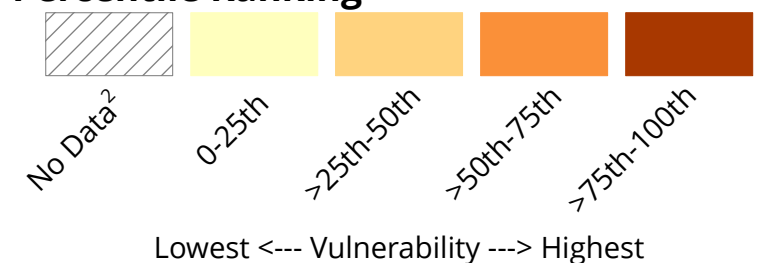


SVI Theme: Household Characteristics

Social vulnerability refers to a community's capacity to prepare for and respond to the stress of hazardous events ranging from natural disasters, such as tornadoes or disease outbreaks, to human-caused threats, such as toxic chemical spills. This map depicts the social vulnerability of communities based on household composition. The census-derived factors¹ that make up the household composition theme include:

- Persons aged 65 and older
- Persons aged 17 and younger
- Persons with a disability
- Single-parent households
- English Language Proficiency

Percentile Ranking



Notes: ¹Percentage of persons aged 65 and older, Percentage of persons aged 17 and younger, Percentage of civilian noninstitutionalized population with a disability, Percentage of single parent households with children under 18, Percentage of persons (age 5 and older) who speak English "less than well"

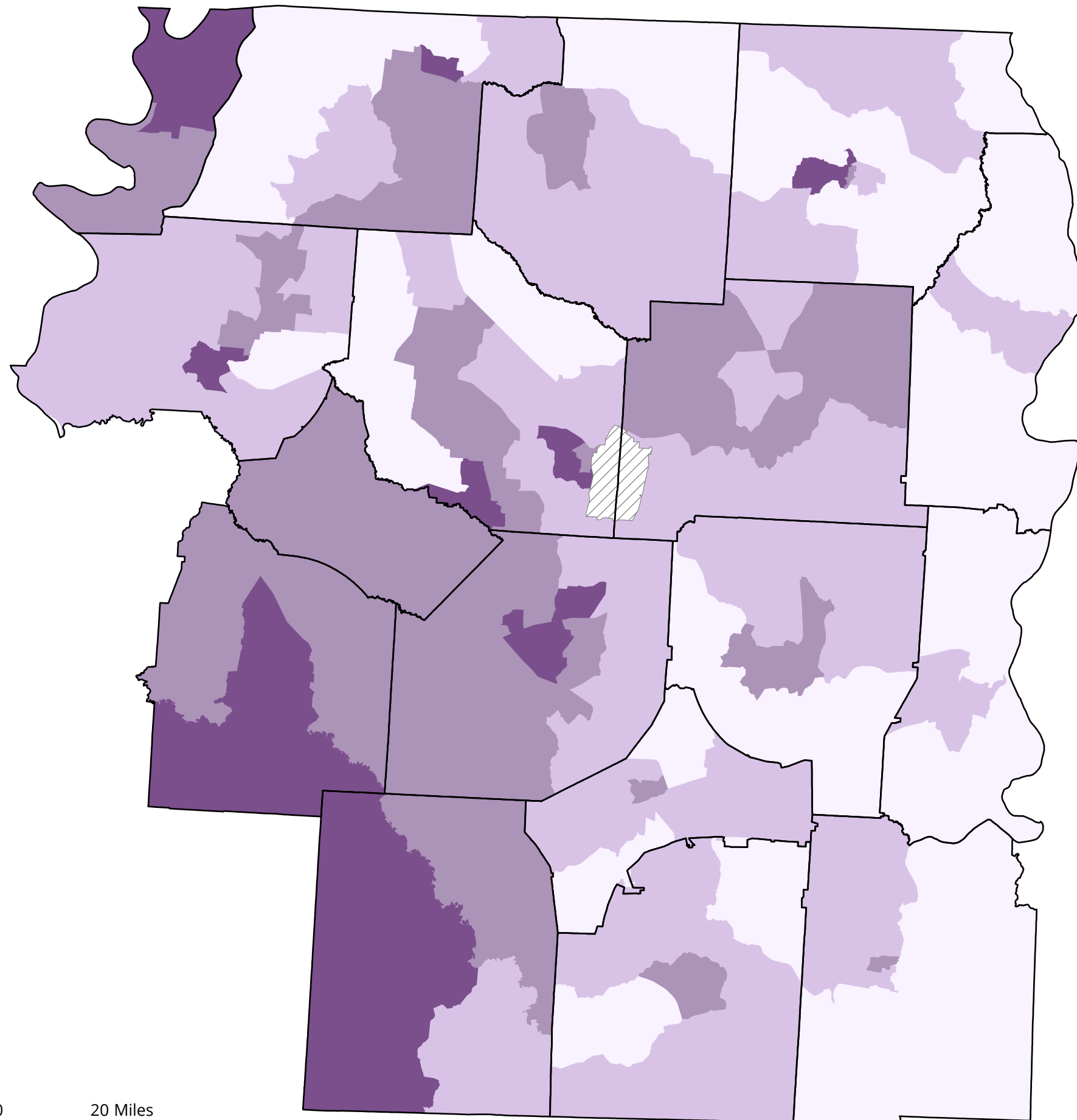
²Census tracts with near 0 population

Data Sources: Centers for Disease Control and Prevention/Agency for Toxic Substances and Disease Registry/Geospatial Research, Analysis, and Services Program. Social Vulnerability Index 2020 State Database.

<https://svi.cdc.gov/SVIDataToolsDownload.html>. Accessed 29 Feb 2024.

Projection: NAD 1983 StatePlane Tennessee FIPS 4100

Social Vulnerability Index, WATCH (West Area TN Coalition of Healthcare)



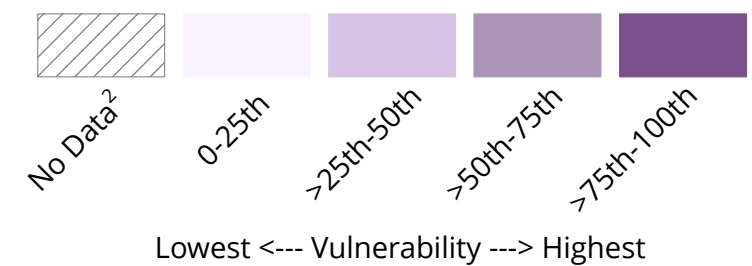
0 5 10 20 Miles

SVI Theme: Race & Ethnicity Minority Status

Social vulnerability refers to a community's capacity to prepare for and respond to the stress of hazardous events ranging from natural disasters, such as tornadoes or disease outbreaks, to human-caused threats, such as toxic chemical spills. This map depicts the social vulnerability of communities based on race and ethnicity. The census-derived factor¹ that make up the race and ethnicity theme include:

-Minority status

Percentile Ranking



Notes: ¹Percentage minority (all persons except white, non-Hispanic)

²Census tracts with near 0 population

Data Sources: Centers for Disease Control and Prevention/Agency for Toxic Substances and Disease Registry/Geospatial Research, Analysis, and Services Program. Social Vulnerability Index 2020 State Database.

<https://svi.cdc.gov/SVIDataToolsDownload.html>. Accessed 29 Feb 2024.

Projection: NAD 1983 StatePlane Tennessee FIPS 4100

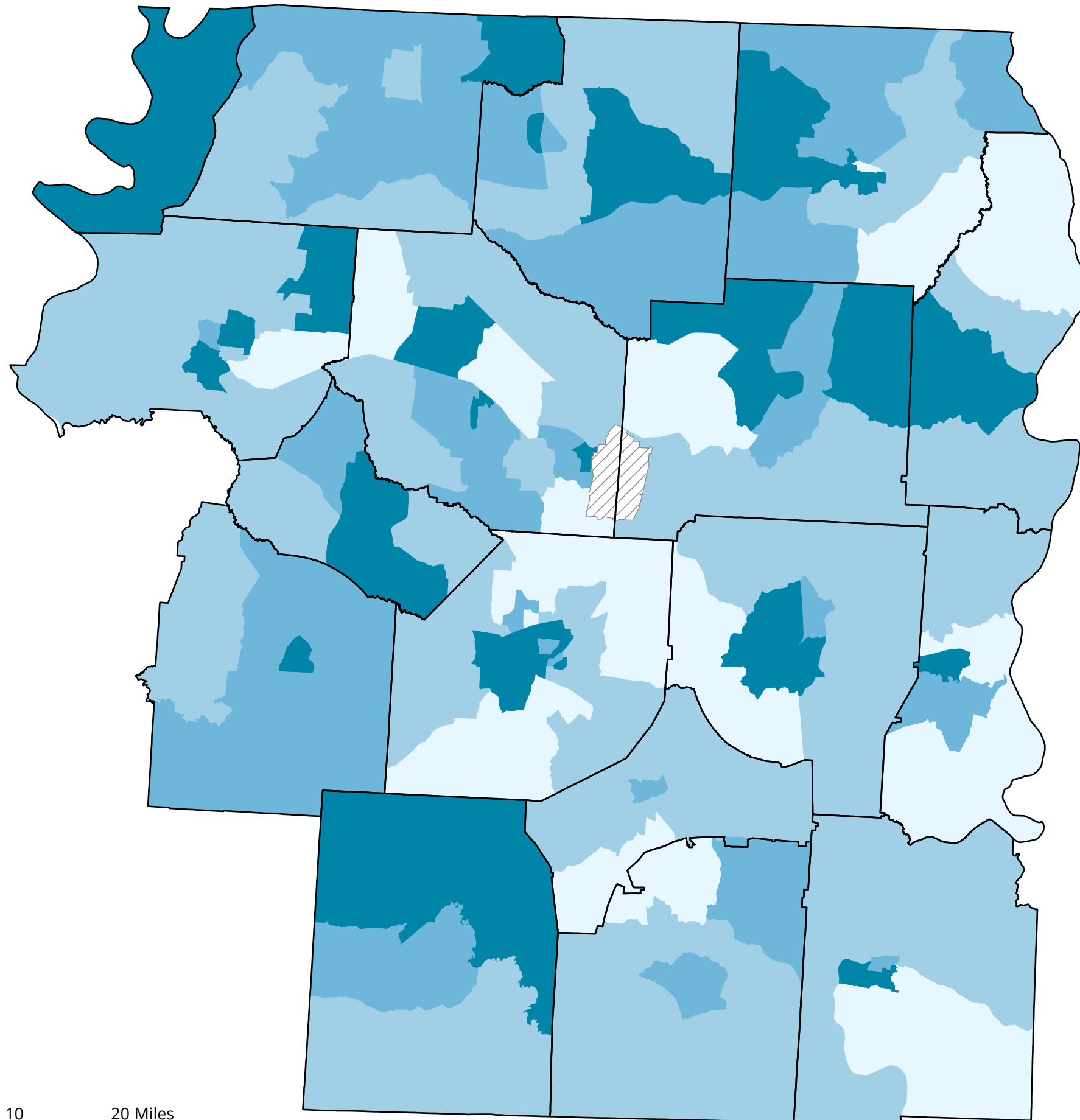
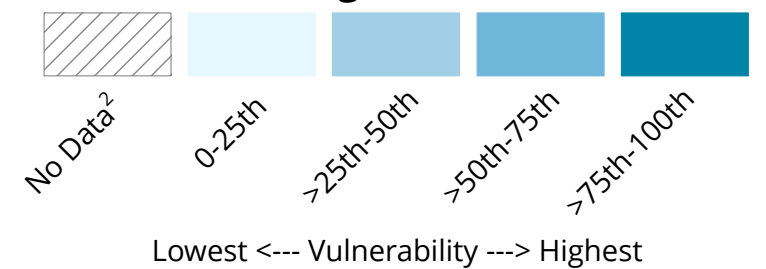
Social Vulnerability Index, WATCH (West Area TN Coalition of Healthcare)

SVI Theme: Housing Type & Transportation

Social vulnerability refers to a community's capacity to prepare for and respond to the stress of hazardous events ranging from natural disasters, such as tornadoes or disease outbreaks, to human-caused threats, such as toxic chemical spills. This map depicts the social vulnerability of communities based on housing and transportation. The census-derived factors¹ that make up the housing and transportation theme include:

- Multi-unit structures
- Mobile homes
- Crowding
- No Vehicle
- Group Quarters

Percentile Ranking



0 5 10 20 Miles

Notes: ¹Percentage of housing in structures with 10 or more units, Percentage of mobile homes, Percentage of occupied housing units with more people than rooms, Percentage of households with no vehicle available, Percentage of persons in institutionalized group quarters

²Census tracts with near 0 population

Data Sources: Centers for Disease Control and Prevention/Agency for Toxic Substances and Disease Registry/Geospatial Research, Analysis, and Services Program. Social Vulnerability Index 2020 State Database.

<https://svi.cdc.gov/SVIDataToolsDownload.html>. Accessed 29 Feb 2024.

Projection: NAD 1983 StatePlane Tennessee FIPS 4100